



# Integrated Child Development Services (ICDS) Scheme



State Institute of Health and Family Welfare,  
Jaipur



# Prologue

- Initiated-Oct.2,1975, in 33 CD Blocks under Five Year Plan
- In succession to objectives of National Children's Policy (Aug. 1974)
- World's largest program for early childhood development



# Purpose for Initiation

- Routine MCH services not reaching target Population
- Nutritional component not covered by Health services
- Need for community participation



# Objectives

- Lay the foundation for proper psychological development of child
- Improve nutritional & health status of children
- Reduce incidence of mortality, morbidity, malnutrition and school drop-outs
- Enhance the capability of mother & family
- Achieve effective coordination among various departments

# Services



- Supplementary nutrition
- Non-formal pre-school education
- Immunization
- Health Check-up
- Referral services
- Nutrition and Health Education

# Beneficiaries of ICDS

- Children < 6 years
- Pregnant & Lactating women
- Women in Reproductive age group (15-44)
- Adolescent Girls (in selected Blocks)



# Target Groups & Service Provider



Services	Target Group	Services Provider
Supplementary Nutrition	Children >6 years; pregnant & lactating mothers	AWW & AWH
Immunization	Children below 6 years; pregnant & lactating mothers	ANM/MO
Health Check-ups	Children >6 years; pregnant & lactating mothers	ANM/MO/AWW
Referral	Children >6 years; pregnant and lactating mothers	AWW/ANM/MO
Pre-School Education	Children 3-6 years	AWW
N& H Education	Women (15-44 years)	AWW/ANM/MO



# Role of AWW

- To elicit community support
- Participation in running the program
- Weigh & record each child every month
- Refer cases
- Organize non-formal pre-school activities
- Provide supplementary nutrition
- Provide health & nutrition education and counseling





# Role of AWW

- Make home visits
- Assist PHC staff
- Guide ASHA
- Assist in implementation of Kishori Shakti Yojana (KSY)



# Role of AW Helper

- Cook & serve food
- Clean the Anganwadi premises
- Cleanliness of small children
- Bring small children to Anganwadi



# Role of ASHA

- Awareness generation
- Counsel women
- Community mobilization
- Work with VHSC
- Escort/accompany pregnant women & children requiring treatment
- Provide primary medical care

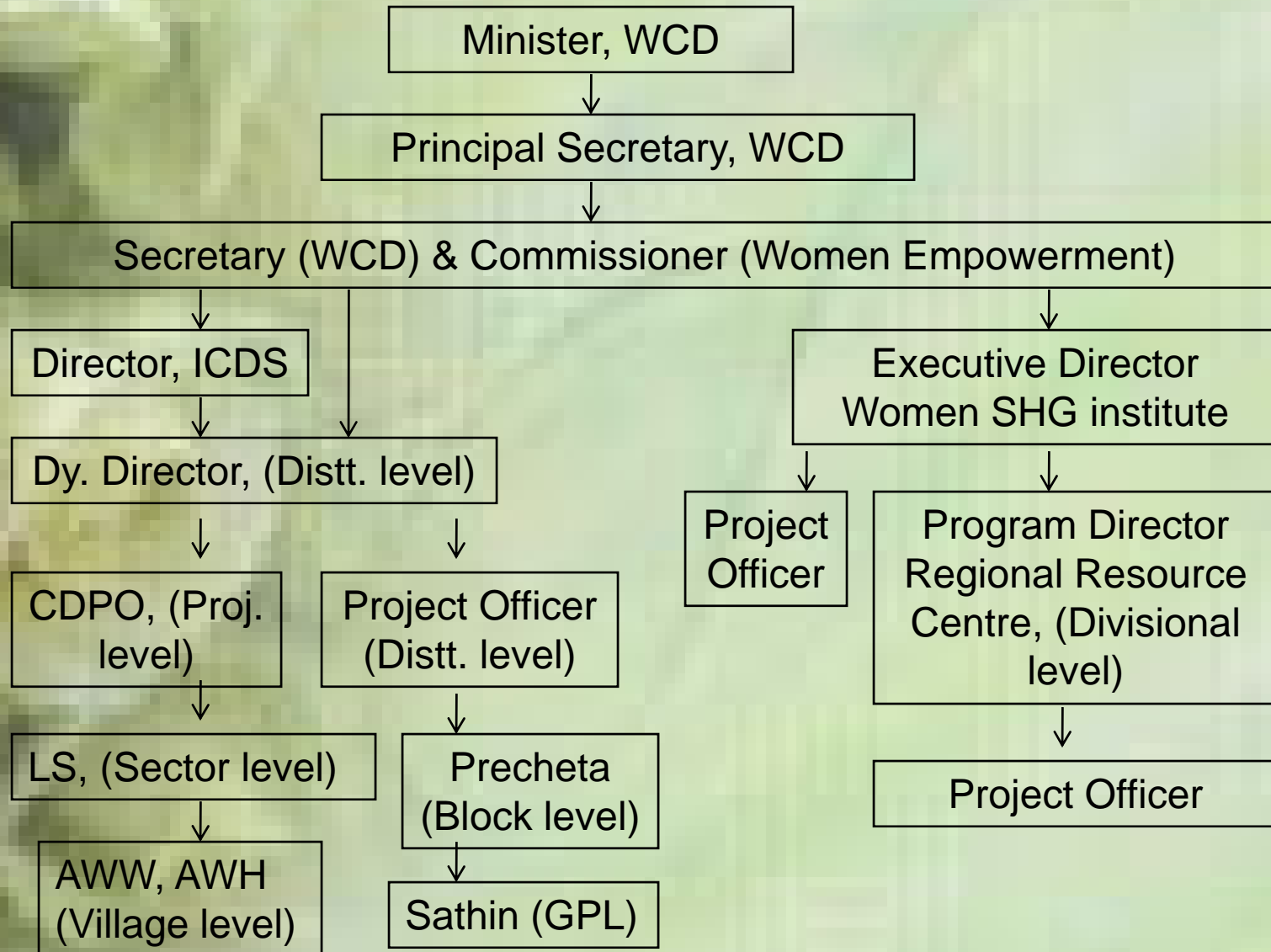


# Role of ANM

- Hold weekly / fortnightly meeting with ASHA
- Participate & guide in organizing the Health Days at AWC
- Utilize ASHA in motivating the pregnant women and married couples
- Guide ASHA in motivating pregnant women for full ANC
- Educate ASHA on danger signs of pregnancy and labor

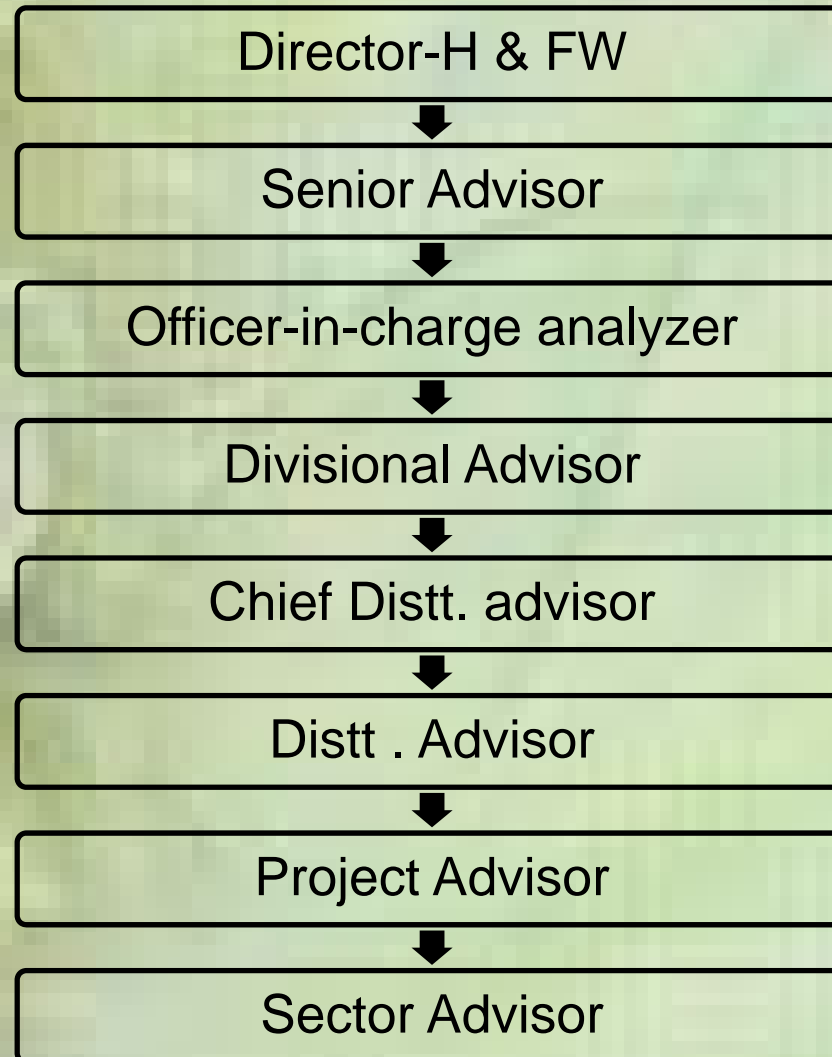


# Women & Child Development





# Health Department





# Role of Health Department

- Health Check-ups
- Handling Referral
- Immunization
- Nutrition & Health Education
- Monitoring of Health components



# Anganwadi Centre

Population Norms:

➤ For Rural/Urban Projects

400-800 - 1 AWC

800-1600 - 2 AWCs

1600-2400 - 3 AWCs

Thereafter in multiples of 800 1 AWC

➤ For Mini-AWC

150-400 -1 Mini AWC





- For Tribal /Riverine/Desert, Hilly and other difficult areas/ Projects  
300-800 - 1 AWC
- For Mini- AWC  
150-300 1 Mini AWC
- At present there are **54915** Anganwadi Centres and **6204** Mini Anganwadi Centres in Rajasthan. (WCD, Rajasthan, Nov. '10)



# Supplementary Nutrition

Beneficiary	Pre-revised		Revised w.e.f. Feb. 2009	
	Calories (KCal)	Protein (G)	Calories (KCal)	Protein (Gm)
Children (6-72 months)	300	8-10	500	12-15
Severely malnourished children (6-72 months)	600	20	800	20-25
Pregnant & Lactating	500	15-20	600	18-20



# Revised Financial Norms for Food Supplement

<b>Category</b>	<b>Pre-revised</b>	<b>Revised w.e.f June 2010</b>
Children (6-72 months)	Rs. 2.00	Rs.4.84
Severely malnourished children (6-72 months)	Rs. 2.70	Rs.5.82
Pregnant & Lactating	Rs. 2.30	Rs.6.00



# Honorarium to Functionaries

Qualification/Year	1975-76	1.04.08	1.4.11
Non-Matriculate	100	1438	3238
Matriculate	150	1500	3269
Non-Matriculate with 5 years experience	-	1469	3300
Matriculate with 5 years experience	-	1531	3300
Non-Matriculate with 10 years experience	-	1500	3331
Matriculate with 10 years experience	-	1563	3363
Mini Anganwadi Worker	-	750	1650
Helper	35	750	1650



# Training Infrastructure

- Anganwadi Workers Training Centers (AWTCs)
- Middle Level Training Centers (MLTCs)
- National Institute of Public Cooperation and Child Development (NIPCCD) and its Regional Centers.



# International Partners

- United Nations International Children' Emergency Fund (UNICEF)
- Cooperative for Assistance and Relief Everywhere (CARE)
- World Food Programme (WFP)



# Major Initiatives

- Revision in Population norms
- Universalization and 3<sup>rd</sup> phase of expansion of the Scheme of ICDS
- Increment in Budgetary allocation for ICDS Scheme
- Introduction of cost sharing between Centre & States
- Revision in financial norms of supplementary nutrition



# Major Initiatives

- Revision of feeding and nutrition norms.
- Enhancement of honoraria
- Introduction of WHO approved Growth Standards
- Provision of flexi funds at Anganwadi level
- The Gov. of India introduced 'Anganwadi Karyakartri Bima Yojna' to AWW & AWH
- A scheme of award for AWWs introduced both at the National and State Level





- Paid absence of 135 days of maternity leave
- Provision of Uniform for AWWs and Helpers
- Strengthening of Management Information System (MIS)
- Revision in cost norms of Training component of ICDS Scheme
- BPL no longer a criteria



# Monitoring System

- Central level
- State level
- Block level
- Village level (Anganwadi level)



# Achievements

Year	No. of operational projects	No. of operational AWCs	No. of Supplementary nutrition beneficiaries (in lakhs)	No. of pre-school education beneficiaries (in lakhs)
31.03.06	5659	748229	562.18	244.64
31.03.07	5829	844743	705.43	300.81
31.03.08	6070	1013337	343.26	339.11
31.03.09	6120	1044269	373.43	340.60



# No. of Supplementary Nutrition Beneficiaries

<b>Year</b>	<b>Total Target for SNP</b>	<b>0-3 Year Children</b>	<b>3-6 Year Children</b>	<b>Pregnant &amp; Lactating Mothers</b>	<b>Adolescent Girls</b>	<b>Total</b>
Sep. 2010	5004511	1668437	1087249	828639	24839	3585401

Progress Report: Sep. 2010



# Punctuations

- Practically children 3-6 Yrs.
- Pregnant & Lactating not covered
- Irregular food supplies
- Quality of Nutrition supplement?
- Poor supervision
- Lack of community ownership/ participation
- Nutrition education only on papers
- Children come only for food



## Thank You

For more details log on to  
[www. sihfwrajasthan.com](http://www.sihfwrajasthan.com)  
or  
contact : Director-SIHFW  
on  
[sihfwraj@yahoo.co.in](mailto:sihfwraj@yahoo.co.in)